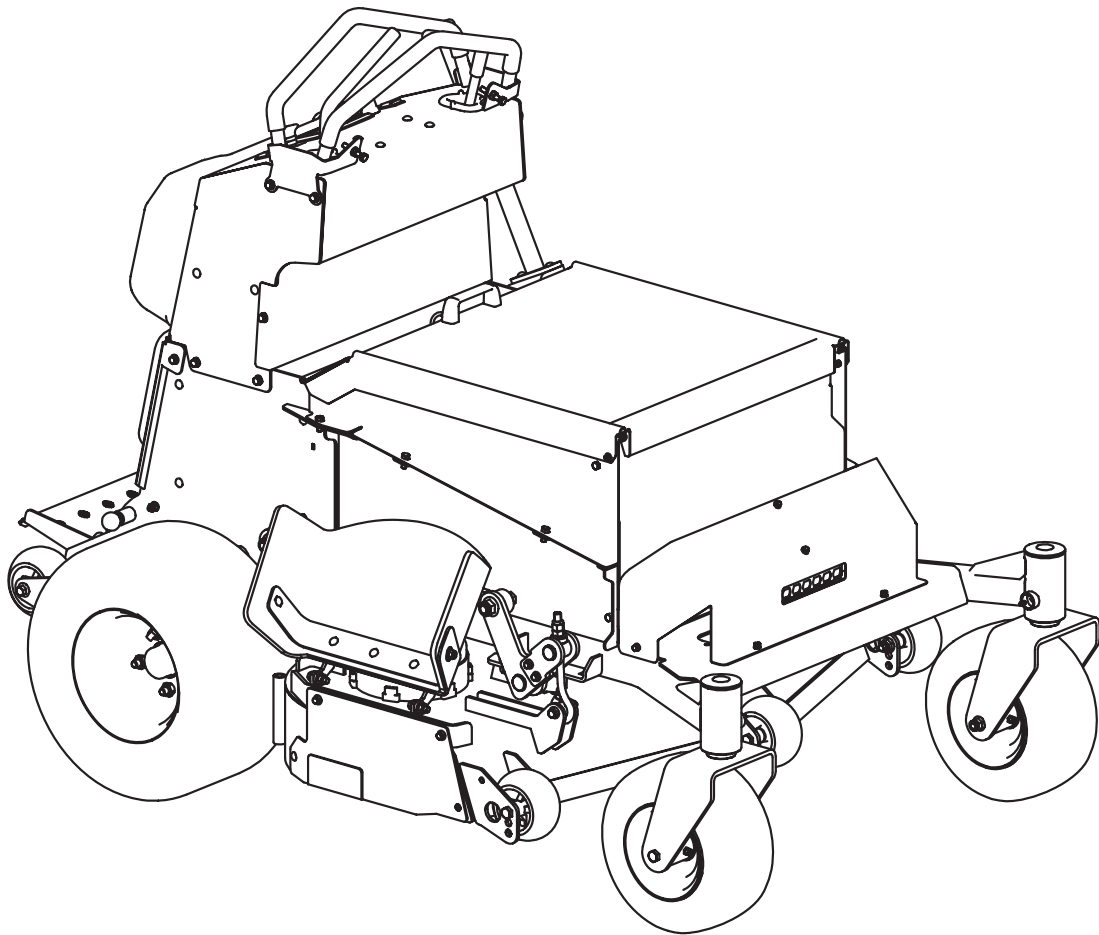


# GREENWORKS

## COMMERCIAL

### Stand On Mower 2516702 (Model No. GZM52S)



Part's Manual

**TOLL-FREE HELPLINE: 1-855-470-4267**

[www.GreenworksCommercial.com](http://www.GreenworksCommercial.com)

---

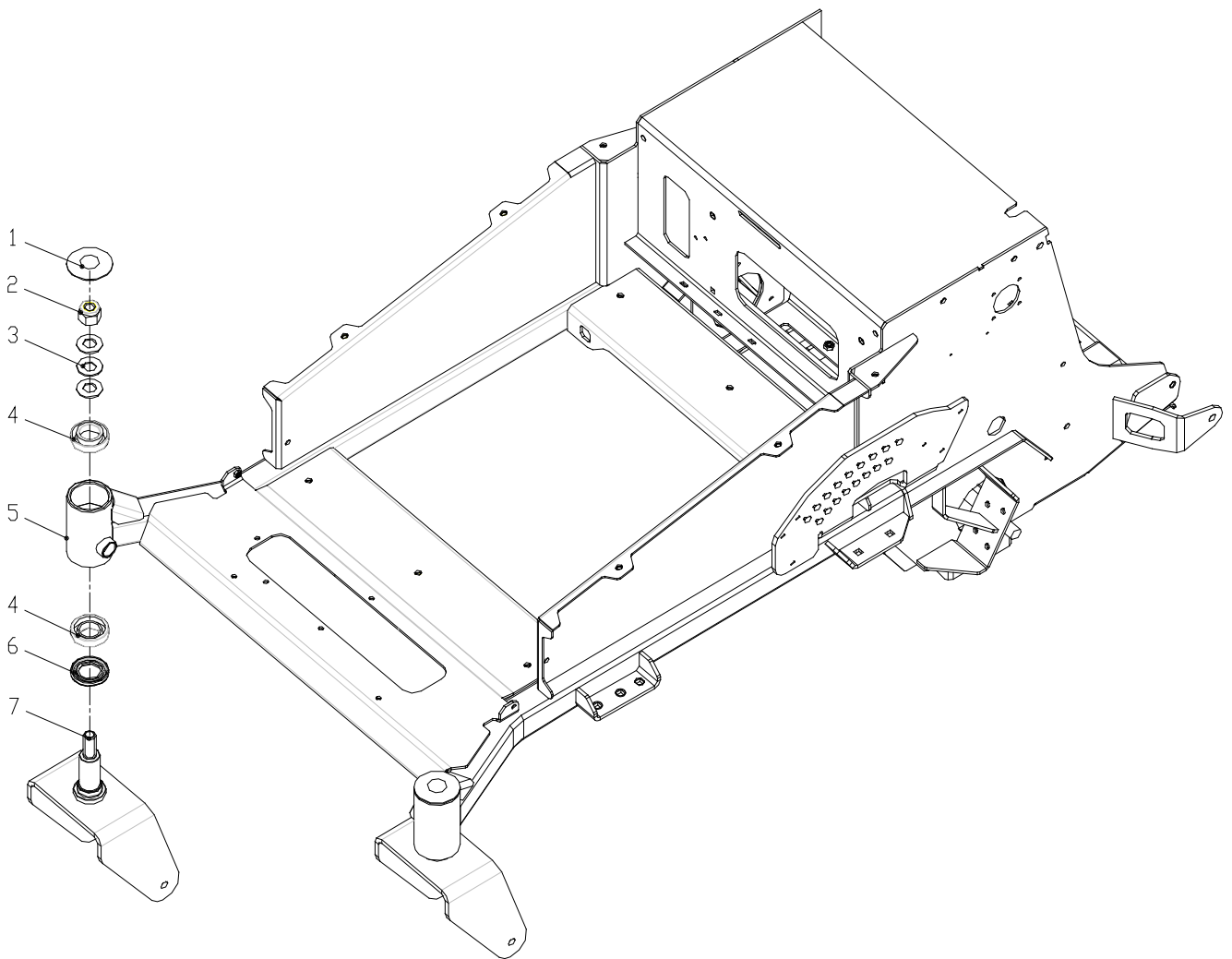
**⚠** Read all safety rules and instructions carefully before operating this tool.

# CONTENTS

RACK ASSEMBLY.....	3
RACK FRONT ASSEMBLY.....	5
REAR AXLE ASSEMBLY.....	8
HEADER ASSEMBLY.....	10
HEADER ASSEMBLY.....	12
CONTROL SYSTEM COVER ASSEMBLY.....	14
LEFT CONTROL SYSTEM COMPONENT.....	16
RIGHT CONTROL SYSTEM COMPONENT.....	18
LEFT MANIPULATION ASSEMBLY.....	20
RIGHT MANIPULATION ASSEMBLY.....	22
INCREASE SYSTEM COMPONENTS.....	24
FRONT HEIGHT ADJUSTMENT.....	26
REAR HEIGHT ADJUSTMENT.....	28
BATTERY COVER ASSEMBLY.....	30
CUSHION ASSEMBLY.....	32
PEDAL ASSEMBLYELECTRICAL COMPONENTS.....	34
ELECTRICAL COMPONENTS.....	36

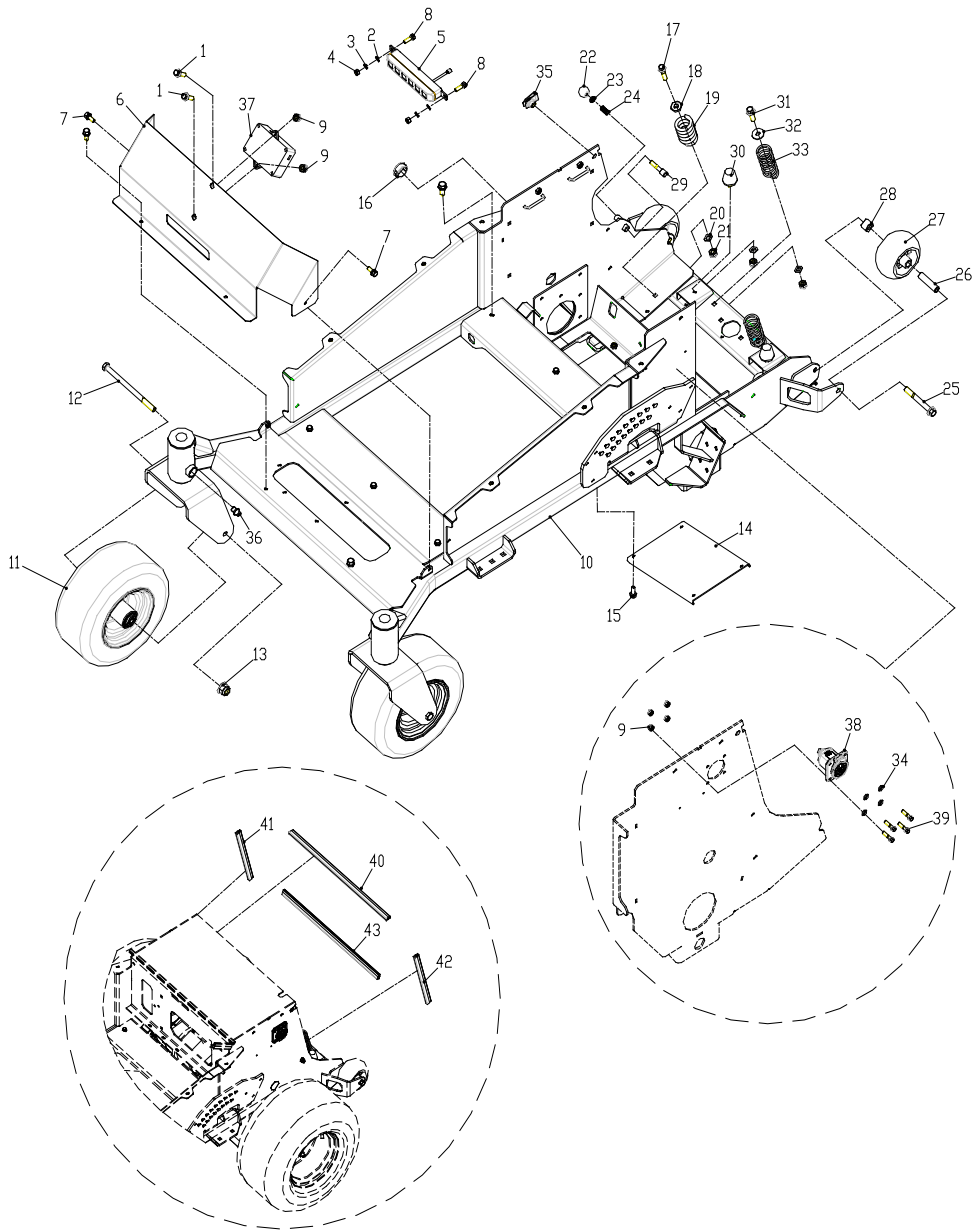
**NOTE:** *ILLUSTRATIONS MAY OR MAY NOT REPRESENT THE ACTUAL ASSEMBLIES AND IT IS NOT RECOMMENDED TO USE THIS MANUAL AS A GUIDE TO ASSEMBLE OR DISASSEMBLE THE MOWER.*

# RACK ASSEMBLY



<b>IETM NO.</b>	<b>PART NO.</b>	<b>DESCRIPTION</b>	<b>QTY</b>
1-1	3320031522	Dust cap	2
1-2	3220881523	Lock nut M20	2
1-3	3220871523	Disc spring A40-2	6
1-4	3221091523	Bearings 320/32	4
1-5	3320011523	Base welding	1
1-6	3221101523	Oil seal ( F ) 38X58X8	2
1-7	3320571523	Front fork welding	2

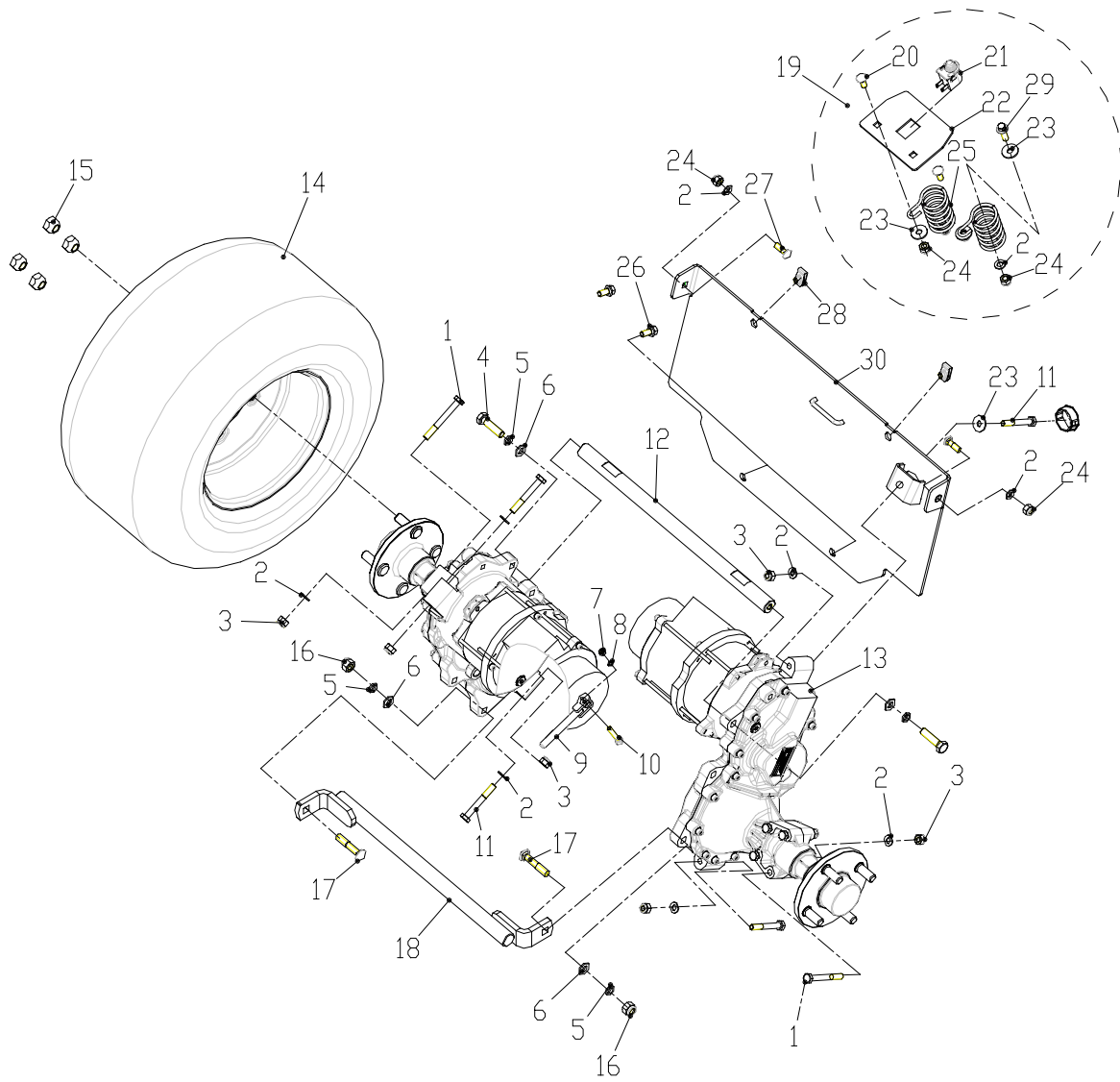
# RACK FRONT ASSEMBLY



<b>IETM NO.</b>	<b>PART NO.</b>	<b>DESCRIPTION</b>	<b>QTY</b>
2-1	3220171523	Bolts M6 × 20	2
2-2	3220691523	Flat washer	2
2-3	3220621523	Spring washer	2
2-4	3220281523	Nut M5	2
2-5	3110051522	LED light	1
2-6	3320031523	Front welding	1
2-7	3220571523	Bolts assembly	4
2-8	3220751523	Bolt M5X16	2
2-9	3220381523	Lock nut M6	6
2-10	311531523	Rack assembly	1
2-11	3420111523	Front wheel assembly	2
2-12	3320062337	Bolt M12X190	2
2-13	3220291522	Lock nut M12	2
2-14	3330011523	Bottom plate	1
2-15	3220591523	Bolt assembly	10
2-16	3410091523	Blocking	2
2-17	3220851523	Bolt M8 × 35	2
2-18	3320591523	Spring cushion	2
2-19	3320511523	Damping spring	2
2-20	3220711523	Flat washer	6
2-21	3220391523	Lock nut M8	6
2-22	3220761523	Handle ball type A M10X20	1
2-23	3220781523	Nut M10	1
2-24	3320561523	Pin spring	1

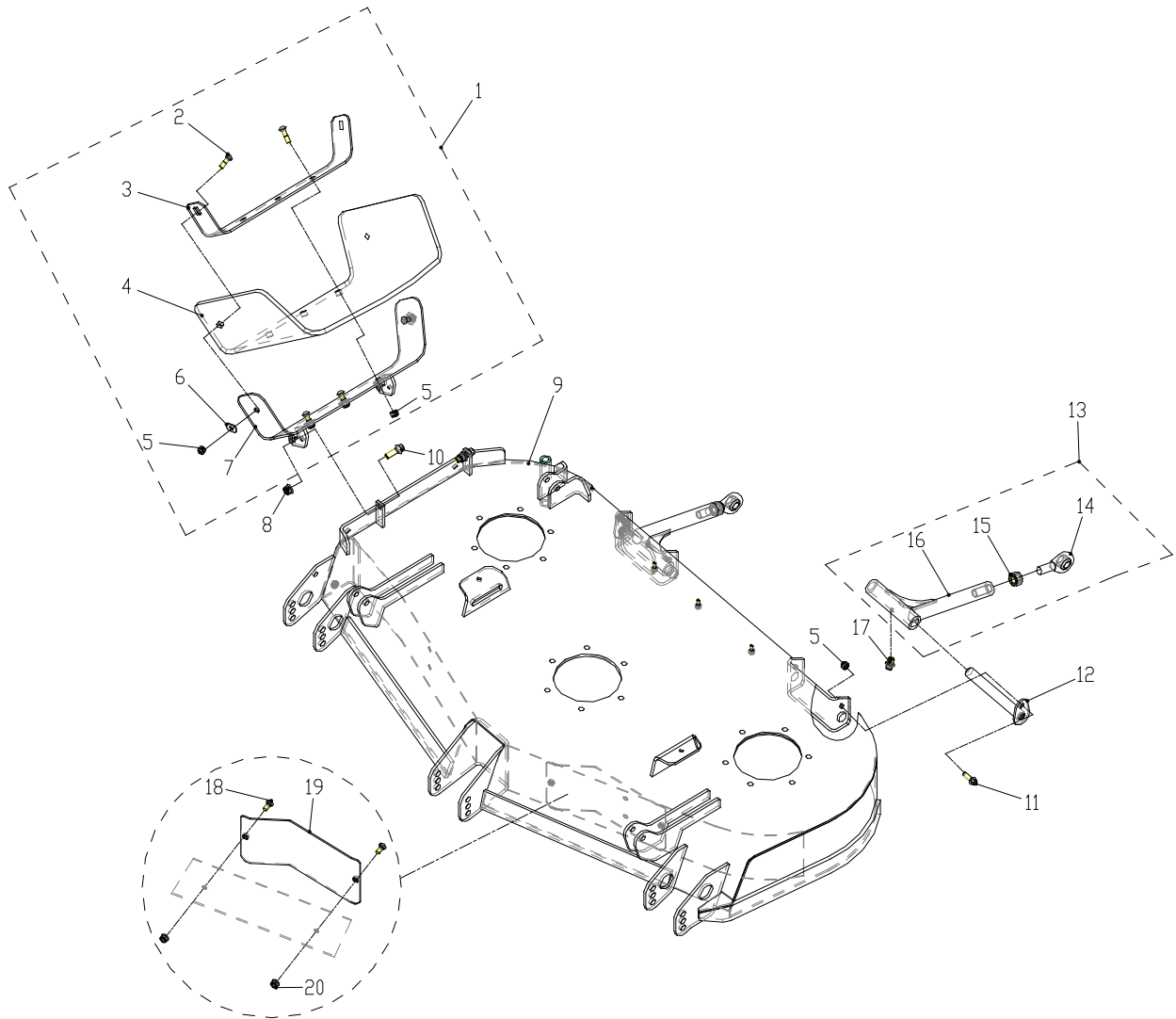
<b>IETM NO.</b>	<b>PART NO.</b>	<b>DESCRIPTION</b>	<b>QTY</b>
2-25	3220151523	Bolt M12 × 100	2
2-26	3320371523	Roller shaft	2
2-27	3410041523	Wheel	2
2-28	3320381523	Roller shaft	2
2-29	3320551523	Fixed latch	1
2-30	3420101523	Cushion	2
2-31	3220241523	Bolt M8x25	2
2-32	3220661523	Large washer	2
2-33	3320581523	Support spring	2
2-34	3220701523	Flat washer	4
2-35	3220731523	Nut M8	2
2-36	3290021523	Oil cup M6 ( stainless steel)	2
2-37	3620031522	GPRS	1
2-38	3690041522	Charger mount	1
2-39	3221111523	Screw M6X25	4
2-40	3420251523	Rubbern strip	0.57 m
2-41	3420251523	Rubber strip	0.28 m
2-42	3420251523	Rubber strip	0.28 m
2-43	3420251523	Rubber strip	0.56 m

# REAR AXLE ASSEMBLY



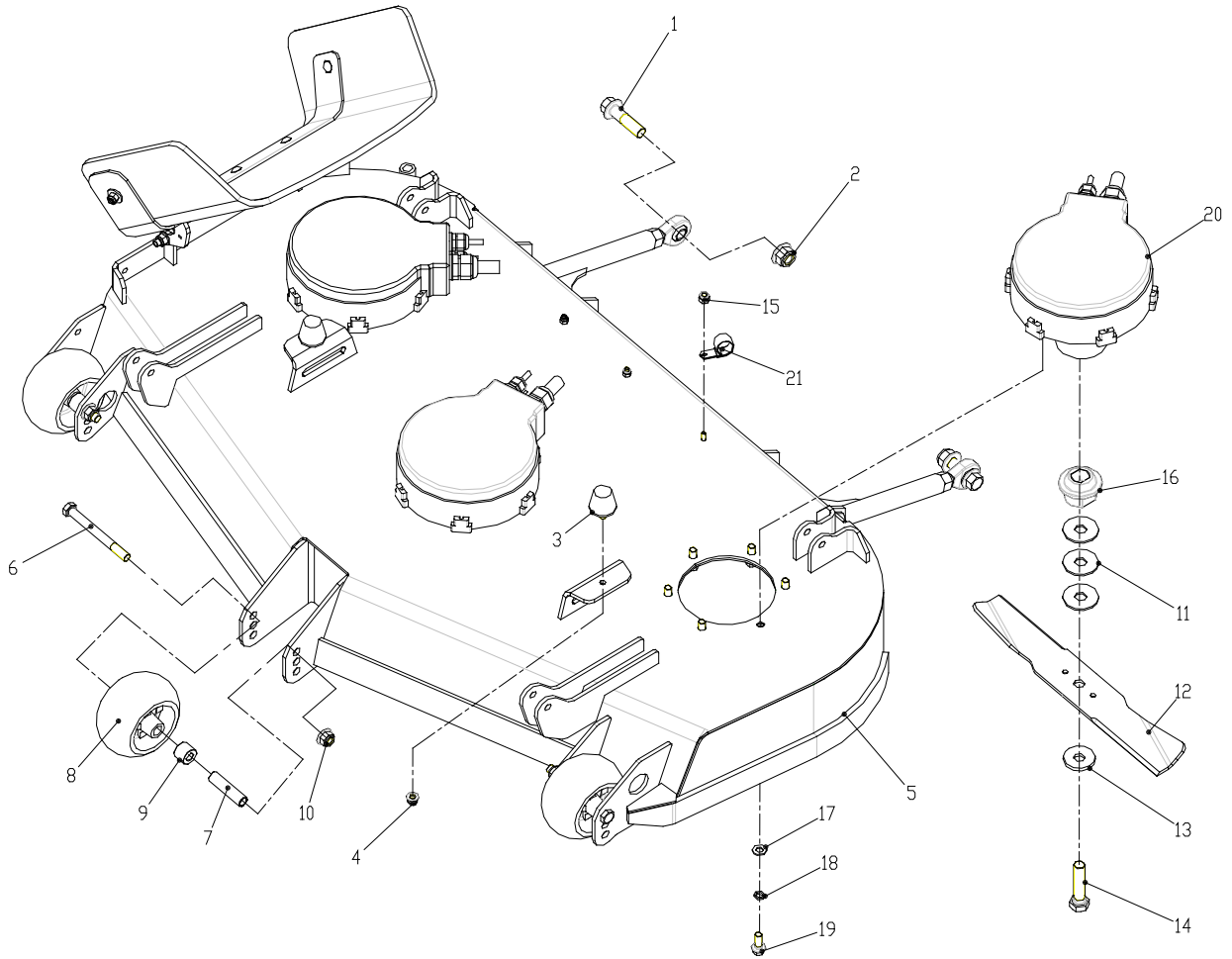
<b>IETM NO.</b>	<b>PART NO.</b>	<b>DESCRIPTION</b>	<b>QTY</b>
3-1	3221061523	Bolt M8X70	8
3-2	3220711523	Flat washer	16
3-3	3221081523	Lock nut M8	12
3-4	3220041523	Bolt M10 × 40	2
3-5	3220101522	Spring washer	4
3-6	3220121522	Flat washer	4
3-7	3220801523	Nut M4	2
3-8	3220611523	Spring washer	2
3-9	3320721523	Brake swing arm welding	2
3-10	3220101523	Screw M4X25	2
3-11	3221071523	Bolt M8X60	4
3-12	3320021523	Support rod	1
3-13	3110031523	Motor drive assembly	2
3-14	3110021523	rear wheel	2
3-15	3320261523	Nut 1/2-20UNF	8
3-16	3220331523	Lock nut M10	2
3-17	3220481523	Bolt	2
3-18	3320791523	Lower support rod welding	1
3-19	311521523	Compression spring assembly	1
3-20	3220501523	Bolt	2
3-21	3630061522	Brake switch	1
3-22	3330321523	Spring plate	1
3-23	3220661523	Large washer	4
3-24	3220391523	Lock nut M8	6
3-25	3320351523	Damping spring ( 2 )	2
3-26	3220591523	Bolts assembly	2
3-27	3220511523	Bolt M8 × 25	2
3-28	3220731523	Reed nut M8	2
3-29	3220241523	Bolts M8x25	2
3-30	3320041523	Rear support welding	1

# HEADER ASSEMBLY



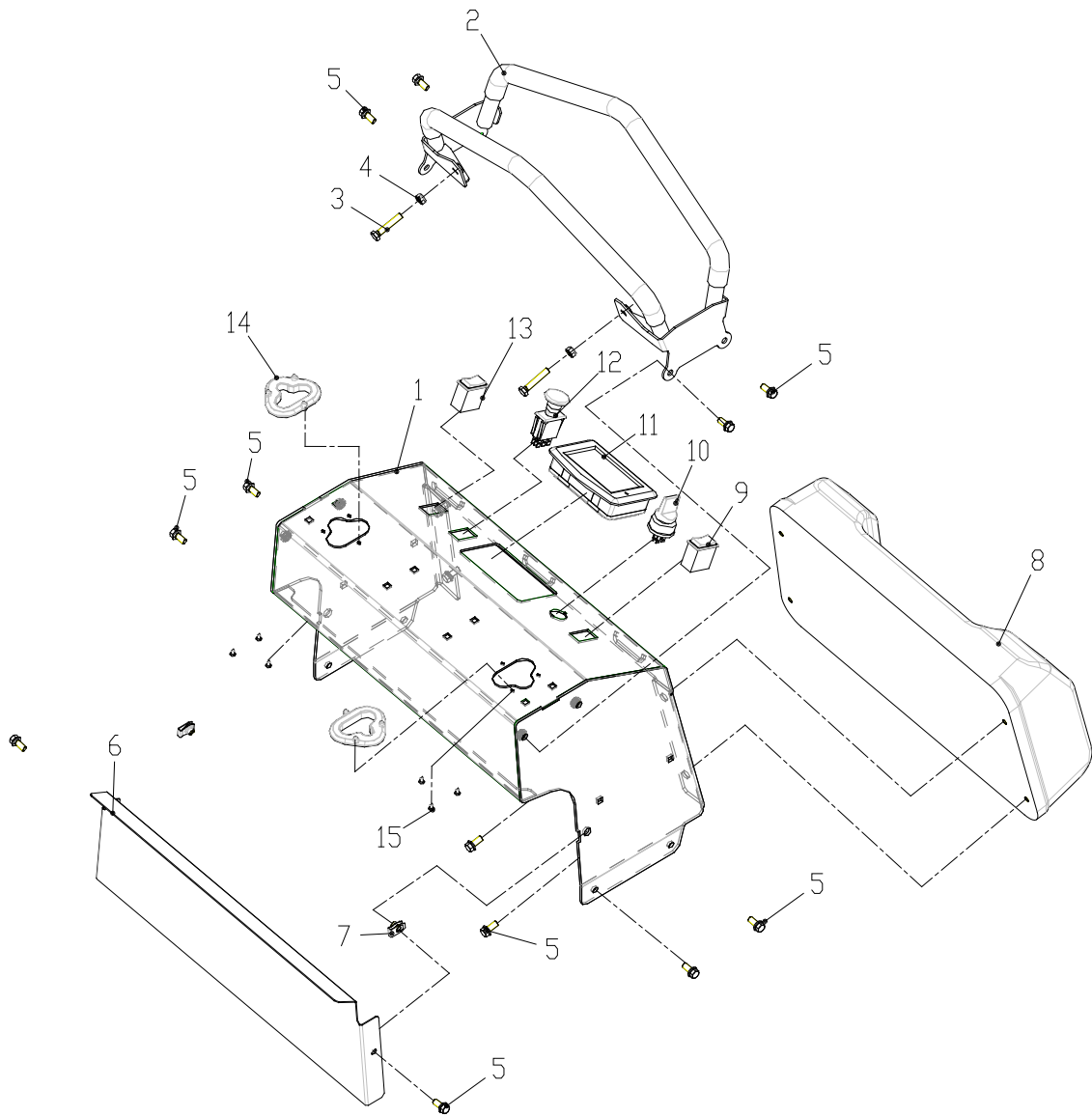
<b>IETM NO.</b>	<b>PART NO.</b>	<b>DESCRIPTION</b>	<b>QTY</b>
4-1	311381522	Deflector rubber assembly	1
4-2	3220521523	Bolt M8×30	5
4-3	3330052337	Lower bracket	1
4-4	3420041522	Deflector rubber assembly	1
4-5	3220391523	Lock nut M8	7
4-6	3320032337	Upper bracket welding	1
4-7	3220921523	Lock nut M10	2
4-8	3321051523	48 header welding	1
4-9	3220741523	Bolt M10×30	2
4-10	3220241523	Bolt M8x25	2
4-11	3320251523	Header connection pin welding	2
4-12	311561523	Tie rod assembly	2
4-13	3220901523	Rod end 16 SABJK16C	2
4-14	3220911523	Nut M16	2
4-15	3320051523	Tie rod welding	2
4-16	3290021523	Oil cup M6 ( stainless steel)	2
4-17	3220501523	Bolt	2
4-18	3330081522	Wind plate	1
4-19	3220931523	Lock nut M8	2

# HEADER ASSEMBLY



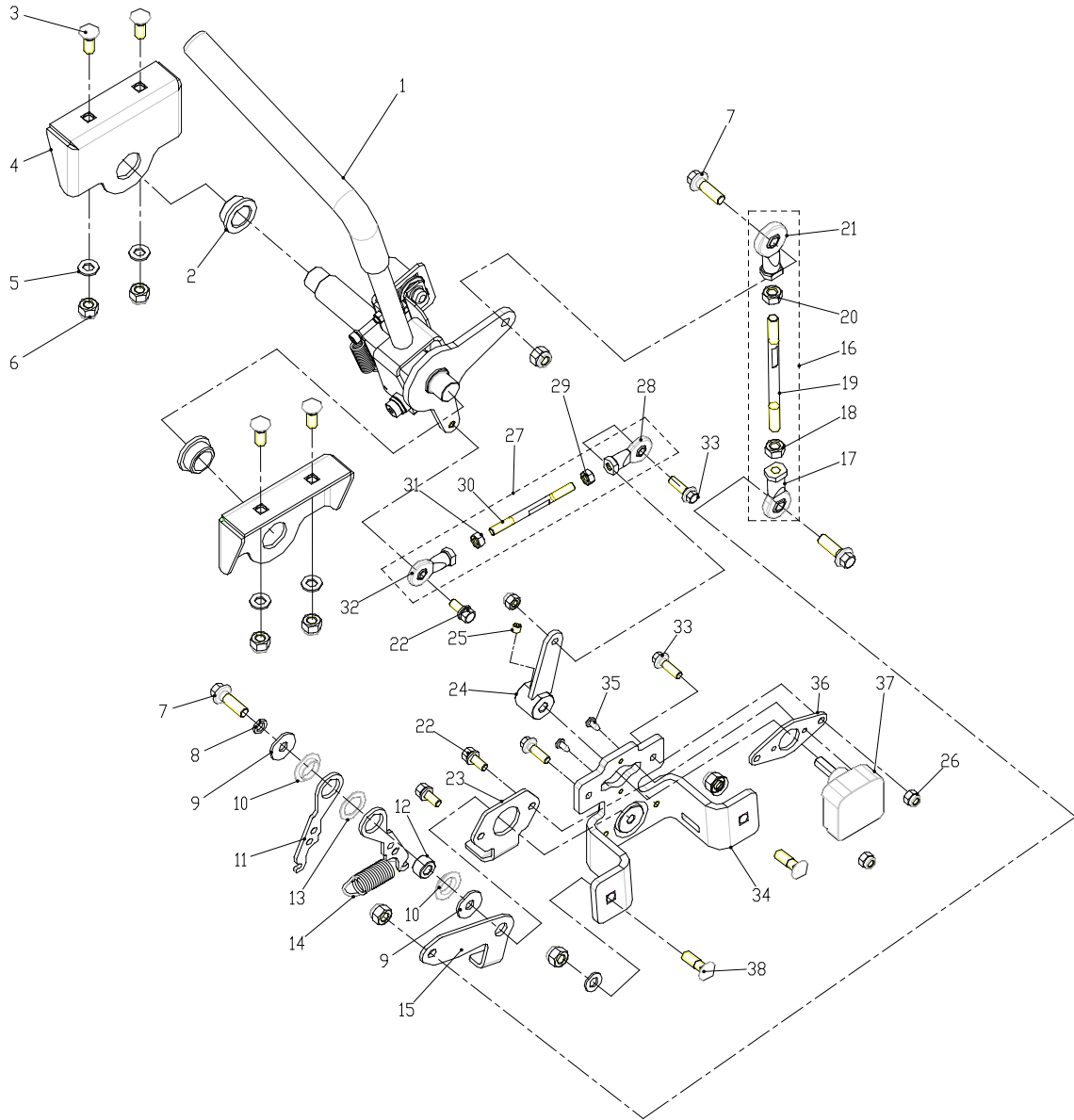
<b>IETM NO.</b>	<b>PART NO.</b>	<b>DESCRIPTION</b>	<b>QTY</b>
5-1	3220161523	Bolt M16×60	2
5-2	3220441523	Lock nut M16	2
5-3	3420101523	Cushion	2
5-4	3220051522	Lock nut M8	2
5-5	311841523	52 header assembly	1
5-6	3220281522	Bolt M12×120	3
5-7	3320371523	Roller shaft	3
5-8	3410041523	Wheel	3
5-9	3320381523	Roller shaft	3
5-10	3220431523	Lock nut M12	3
5-11	3220651523	Large washer	9
5-12	3330251523	16.25" Blade	3
5-13	3330121523	Blade washer	3
5-14	3220941523	Bolt M16 × 70	3
5-15	3220381523	Lock nut M6	3
5-16	3320401523	Knife collar	3
5-17	3220121522	Flat washer	18
5-18	3220101522	Spring washer	18
5-19	3220111523	Bolt M10×25	18
5-20	3610011523	Blade motor	3
5-21	3110061523	Hose clamp	3

# CONTROL SYSTEM COVER ASSEMBLY



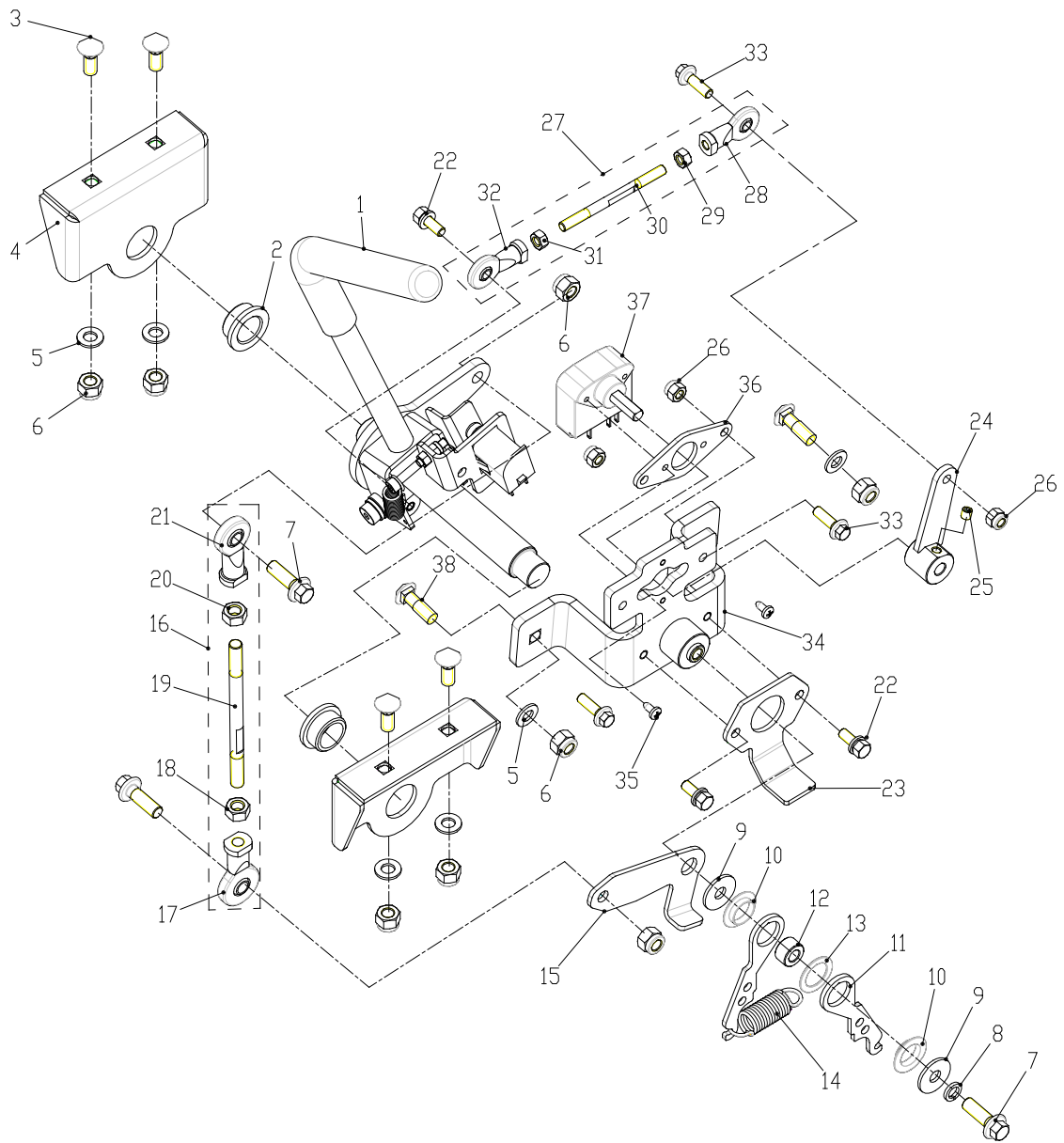
<b>IETM NO.</b>	<b>PART NO.</b>	<b>DESCRIPTION</b>	<b>QTY</b>
6-1	3320601523	Control seat welding	1
6-2	3320611523	Manipulating the hand	1
6-3	3220091523	Bolt M8×45	2
6-4	3220321523	Nut M8	2
6-5	3220591523	Bolt assembly	14
6-6	3330311523	Baffle	1
6-7	3220731523	Nut M8	2
6-8	3190031523	Cushion ( top )	1
6-9	3630051522	High and low gear switch	1
6-10	3630071522	Key	1
6-11	3690031522	Display	1
6-12	3630031522	PTO switch	1
6-13	3630101522	Cutter high and low speed switch	1
6-14	3410201523	Protective cover	2
6-15	3221051523	Screw ST4.2×10	6

# LEFT CONTROL SYSTEM COMPONENT



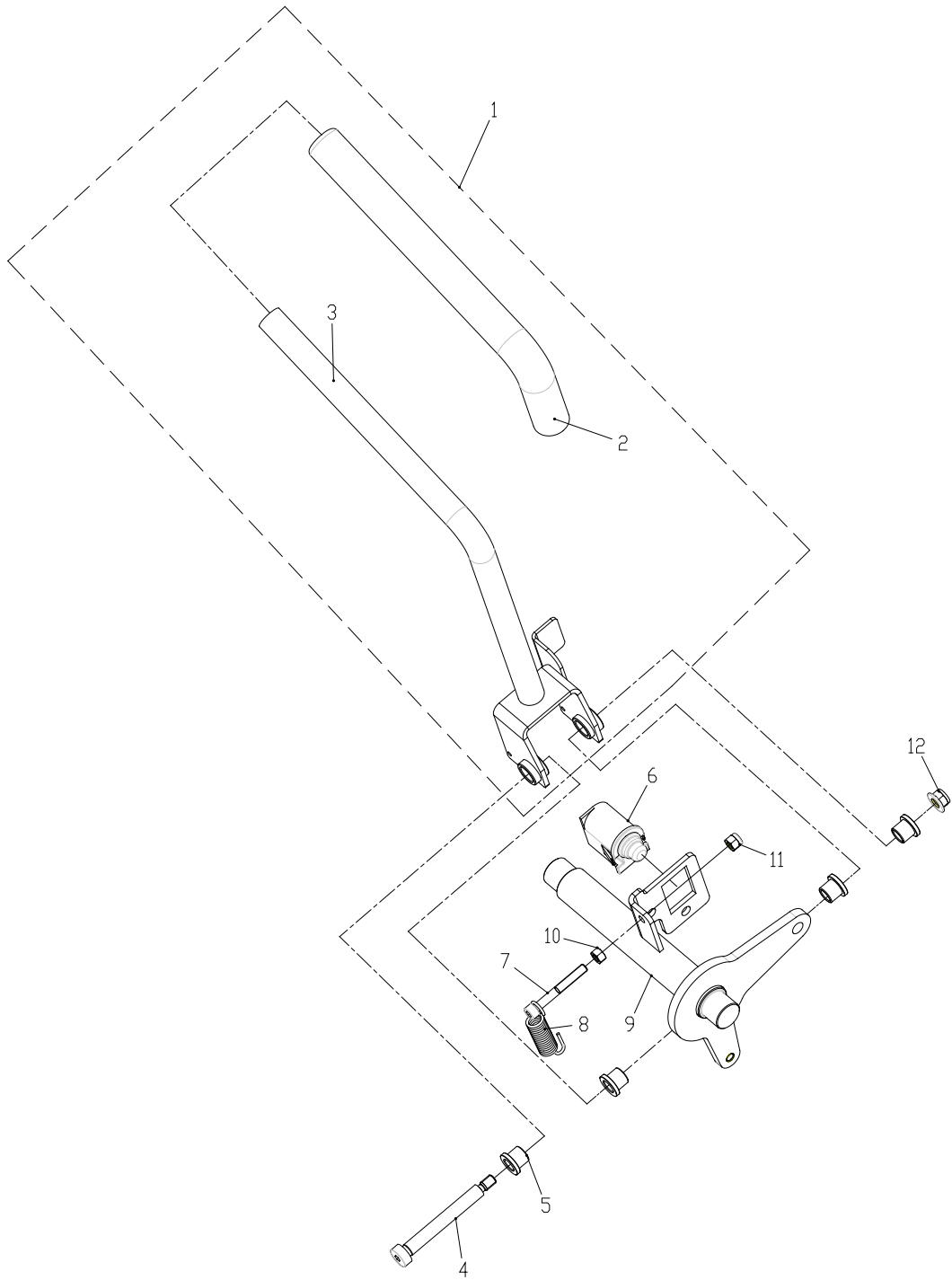
IETM NO.	PART NO.	DESCRIPTION	QTY
7-1	311691523	Left manipulation assembly	1
7-2	3320461523	Bearing	2
7-3	3220501523	Bolt	4
7-4	3330171523	Fixed plate	2
7-5	3220711523	Flat washer	6
7-6	3220391523	Lock nut M8	8
7-7	3220241523	Bolt M8x25	3
7-8	3220641523	Spring washer	1
7-9	3220661523	Large washer	2
7-10	3410211523	Spacer collar	2
7-11	3330381523	Spring hanging plate	2
7-12	3320691523	Sleeve	1
7-13	3410221523	Nylon washer	1
7-14	3320711523	Return spring	1
7-15	3330361523	Left rotating plate	1
7-16	311651523	Linkage	1
7-17	3210031522	Rod end 6	1
7-18	3220011522	Nut M6	1
7-19	3320741523	Adjustment screw	1
7-20	3220021522	Nut ( reverse tooth ) M6	1
7-21	3210041522	Rod end 6 ( reverse tooth )	1
7-22	3220571523	Bolt assembly	3
7-23	3330351523	Limit plate	1
7-24	3320661523	Shaft welding	1
7-25	3221041523	Screw M6X6	1
7-26	3220381523	Lock nut M6	3
7-27	311681523	Return link	1
7-28	3221021523	Rod end 8	1
7-29	3220391522	Nut M8	1
7-30	3320701523	Return rod	1
7-31	3221011523	Nut M8	1
7-32	3221031523	Rod end 8	1
7-33	3220171523	Bolts M6×20	3
7-34	3320671523	Left fixed plate welding	1
7-35	3221051523	Screw ST4.2×10	2
7-36	3330391523	Potentiometer connection plate	1
7-37	3630111522	Accelerator sensor	1
7-38	3220511523	Bolt M8×25	2

# RIGHT CONTROL SYSTEM COMPONENT



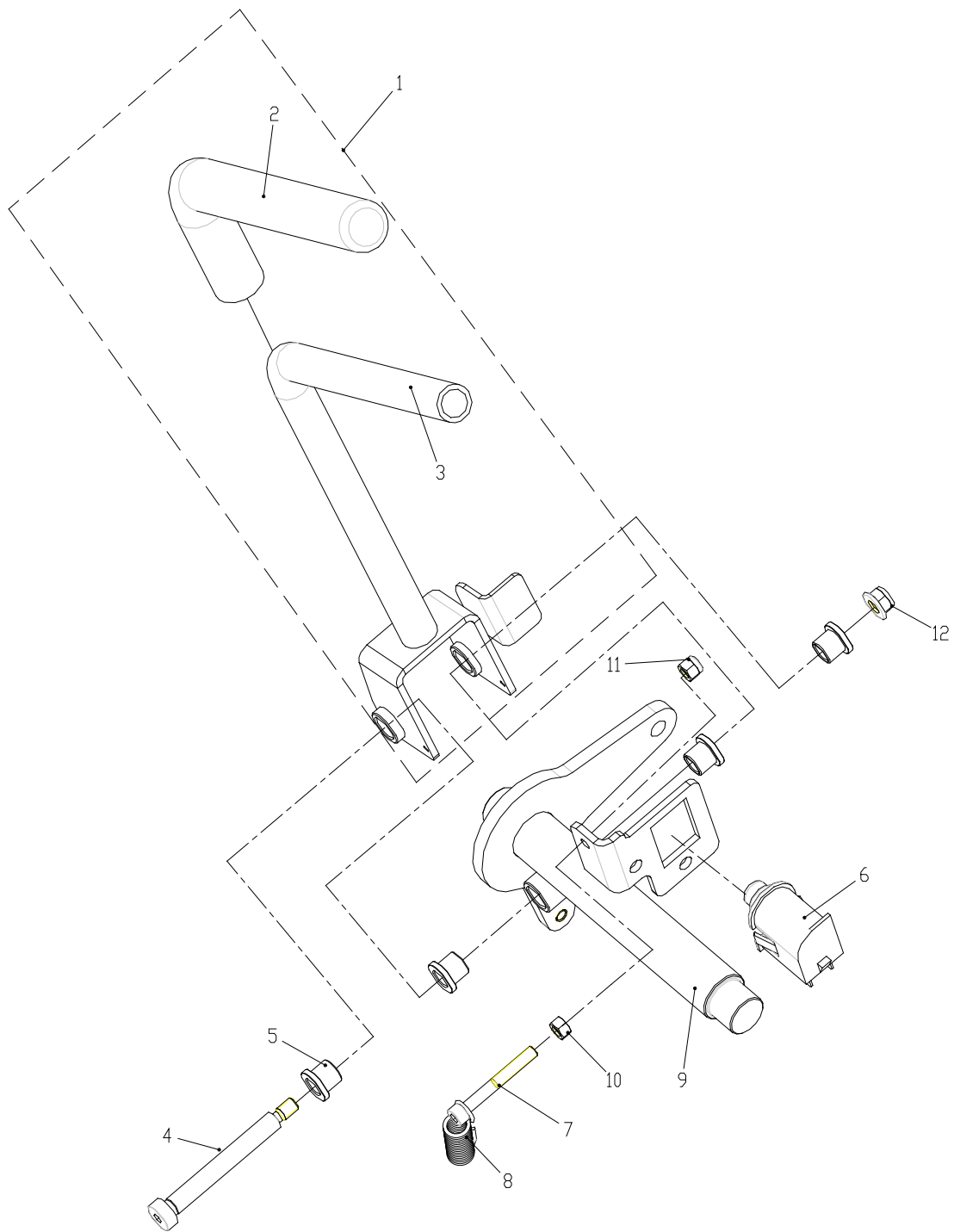
<b>IETM NO.</b>	<b>PART NO.</b>	<b>DESCRIPTION</b>	<b>QTY</b>
8-1	311661523	Right manipulation assembly	1
8-2	3320461523	Bearing	2
8-3	3220501523	Bolt	4
8-4	3330171523	Fixed plate	2
8-5	3220711523	Flat washer	6
8-6	3220391523	Lock nut M8	8
8-7	3220241523	Bolt M8x25	3
8-8	3220641523	Spring washer	1
8-9	3220661523	Large washer	2
8-10	3410211523	Spacer collar	2
8-11	3330381523	Spring hanging plate	2
8-12	3320691523	Sleeve	1
8-13	3410221523	Nylon washer	1
8-14	3320711523	Return spring	1
8-15	3330371523	Right rotating plate	1
8-16	311651523	Linkage	1
8-17	3210031522	Rod end 6	1
8-18	3220011522	Nut M6	1
8-19	3320741523	Adjustment screw	1
8-20	3220021522	Nut ( reverse tooth ) M6	1
8-21	3210041522	Rod end 6 ( reverse tooth )	1
8-22	3220571523	Bolt assembly	3
8-23	3330351523	Limit plate	1
8-24	3320661523	Shaft welding	1
8-25	3221041523	Screw M6X6	1
8-26	3220381523	Lock nut M6	3
8-27	311681523	Return link	1
8-28	3221021523	Rod end 8	1
8-29	3220391522	Nut M8	1
8-30	3320701523	Return rod	1
8-31	3221011523	Nut M8	1
8-32	3221031523	Rod end 8	1
8-33	3220171523	Bolts M6×20	3
8-34	3320681523	Right fixed plate welding	1
8-35	3221051523	Screw ST4.2×10	2
8-36	3330391523	Potentiometer connection plate	1
8-37	3630111522	Accelerator sensor	1
8-38	3220511523	Bolt M8×25	2

# LEFT MANIPULATION ASSEMBLY



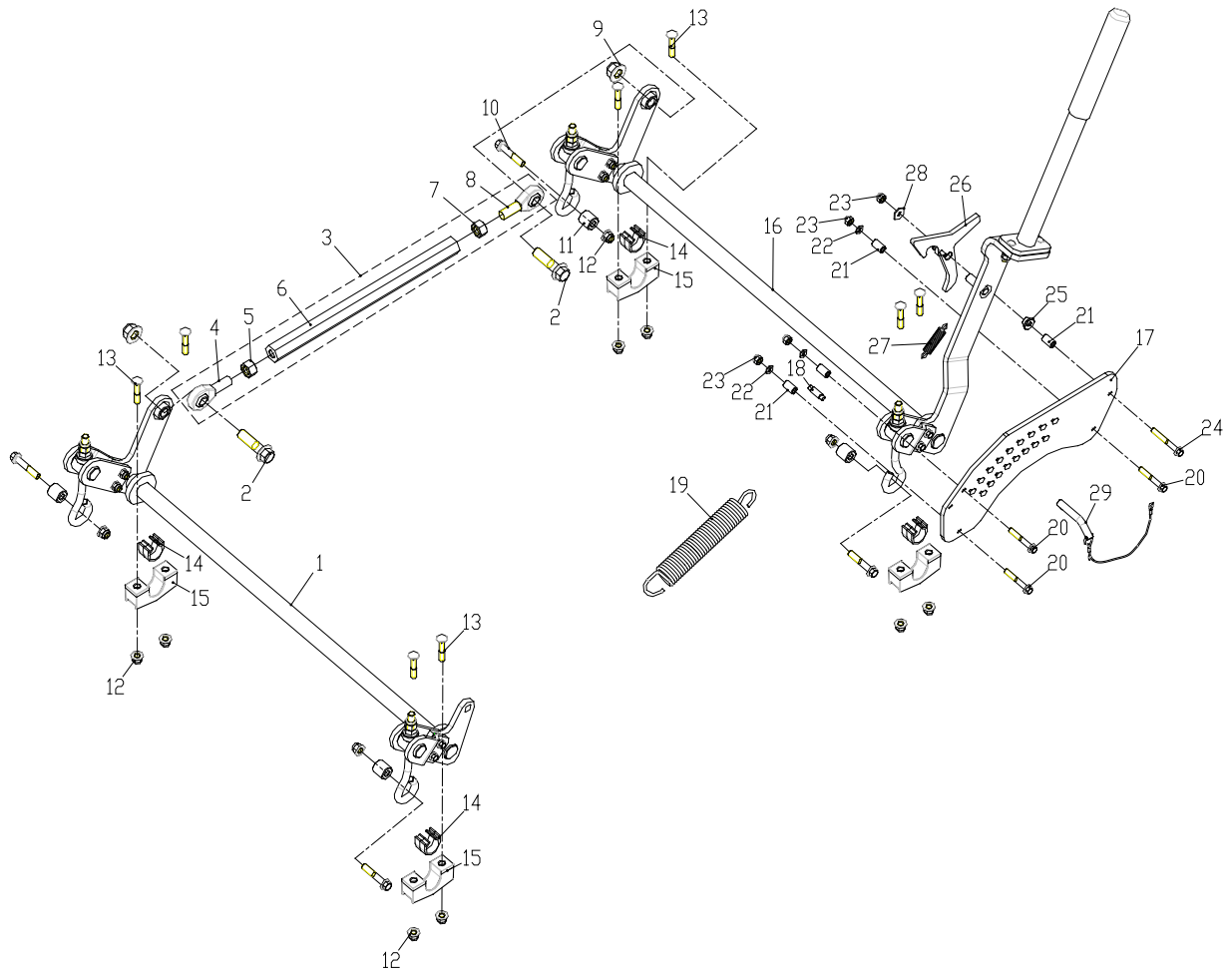
<b>IETM NO.</b>	<b>PART NO.</b>	<b>DESCRIPTION</b>	<b>QTY</b>
9-1	311701523	Left handle	1
9-2	3320631523	Left steering handle welding	1
9-3	3410081523	Joystick cover	1
9-4	3221001523	Screw M8X60	1
9-5	3320501523	Bushing	4
9-6	3630061522	Brake switch	1
9-7	3220461523	Screw M5X40	1
9-8	3320311523	Spring	1
9-9	3320621523	Left shaft welding	1
9-10	3220281523	Nut M5	1
9-11	3220371523	Lock nut M5	1
9-12	3220411523	Lock nut M6	1

# RIGHT MANIPULATION ASSEMBLY



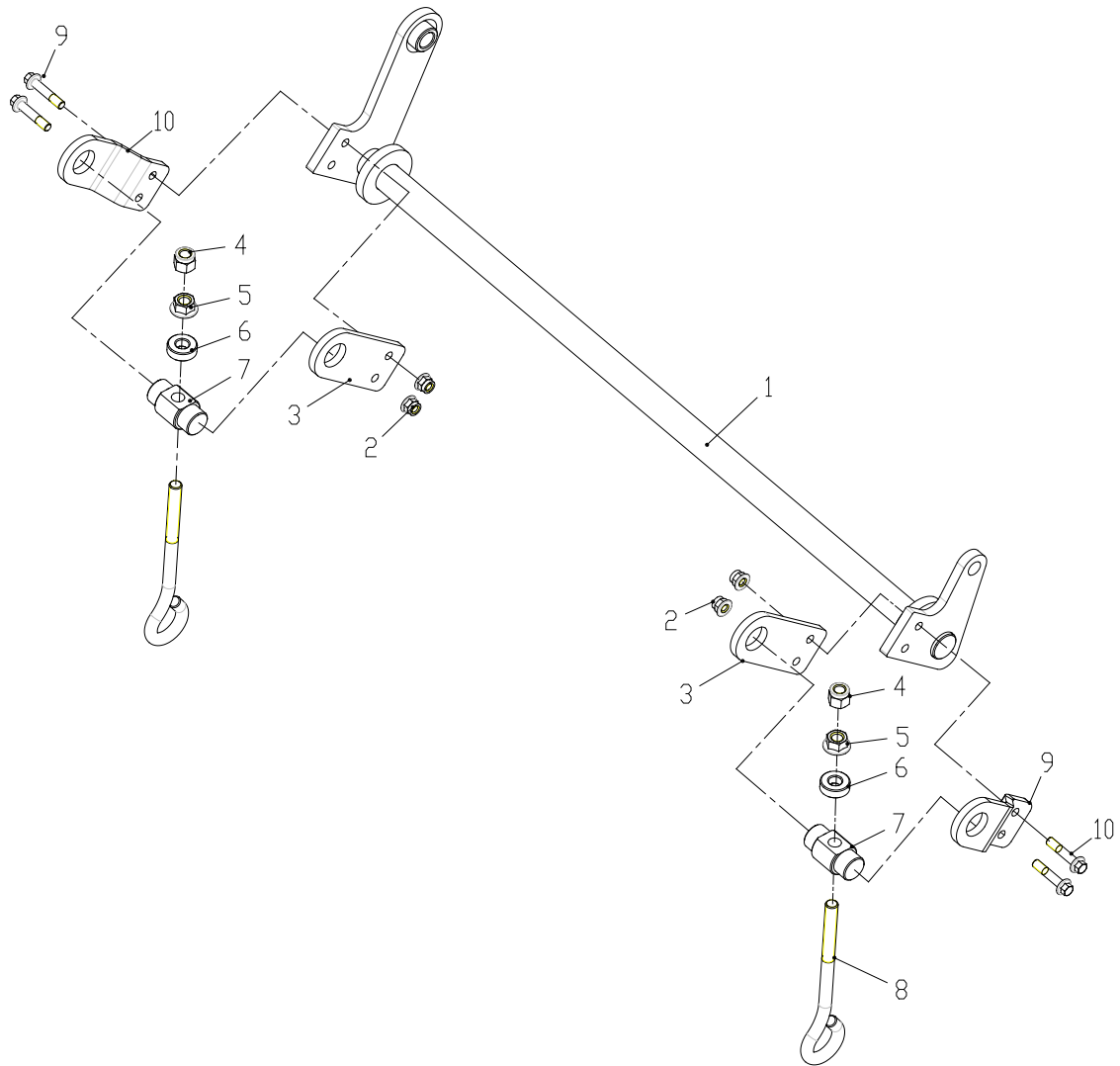
IETM NO.	PART NO.	DESCRIPTION	QTY
10-1	311671523	Right handle	1
10-2	3320651523	Right handle handle welding	1
10-3	3410081523	Joystick cover	1
10-4	3221001523	Screw M8X60	1
10-5	3320501523	Bushing	4
10-6	3630061522	Brake switch	1
10-7	3220461523	Screw M5X40	1
10-8	3320311523	Spring	1
10-9	3320641523	Right shaft welding	1
10-10	3220281523	Nut M5	1
10-11	3220371523	Lock nut M5	1
10-12	3220411523	Lock nut M6	1

# INCREASE SYSTEM COMPONENTS



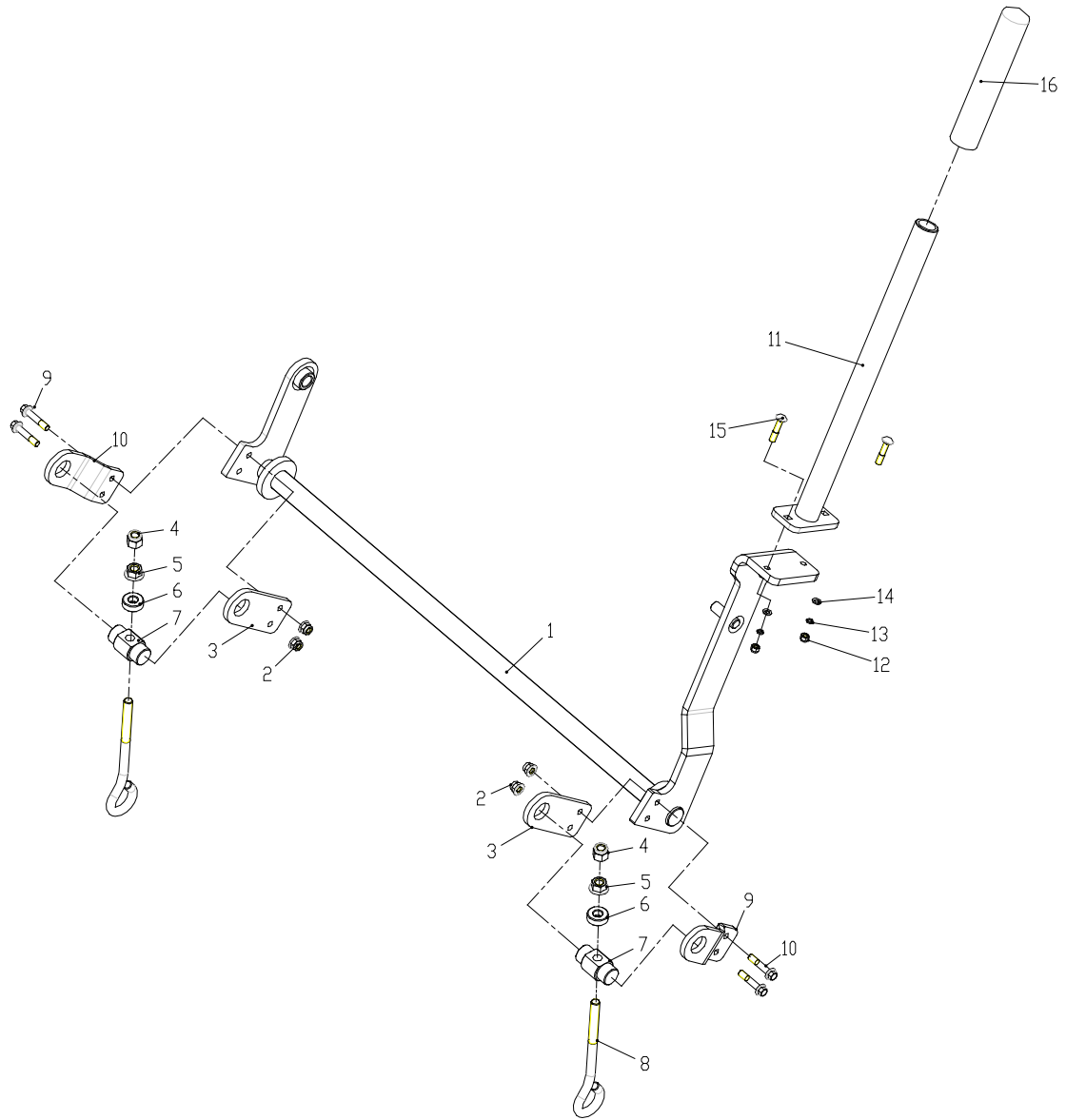
<b>IETM NO.</b>	<b>PART NO.</b>	<b>DESCRIPTION</b>	<b>QTY</b>
11-1	311591523	Front height adjustment	1
11-2	3220161523	Bolts M16×60	2
11-3	311821523	Link	1
11-4	3220901523	Rod end 16	1
11-5	3220911523	Nut M16	1
11-6	3321061523	Rod	1
11-7	3220991523	Nut M1	1
11-8	3220981523	Rod end 16	1
11-9	3220441523	Lock nut M16	2
11-10	3220131523	Bolt M10×55	4
11-11	3321031522	Spacer	4
11-12	3220401523	Lock nut	12
11-13	3220481523	Small semicircular head, low square neck, grade B	8
11-14	3410031523	Collar	4
11-15	3320191523	Fixed seat	4
11-16	311601523	Rear height adjustment	1
11-17	3330071523	Height adjustment board	1
11-18	3320391523	Spring pin	1
11-19	3321071523	Booster	1
11-20	3220201523	Bolt M8×55	3
11-21	3320241523	Bushing	4
11-22	3220711523	Flat washer	3
11-23	3220391523	Lock nut M8	4
11-24	3220221523	Bolt M8×65	1
11-25	3320361523	Bushing	1
11-26	3320411523	Self-locking swing arm welding	1
11-27	3320421523	Return spring	1
11-28	3220661523	Large washer	1
11-29	311411523	Raise the zipper	1

# FRONT HEIGHT ADJUSTMENT



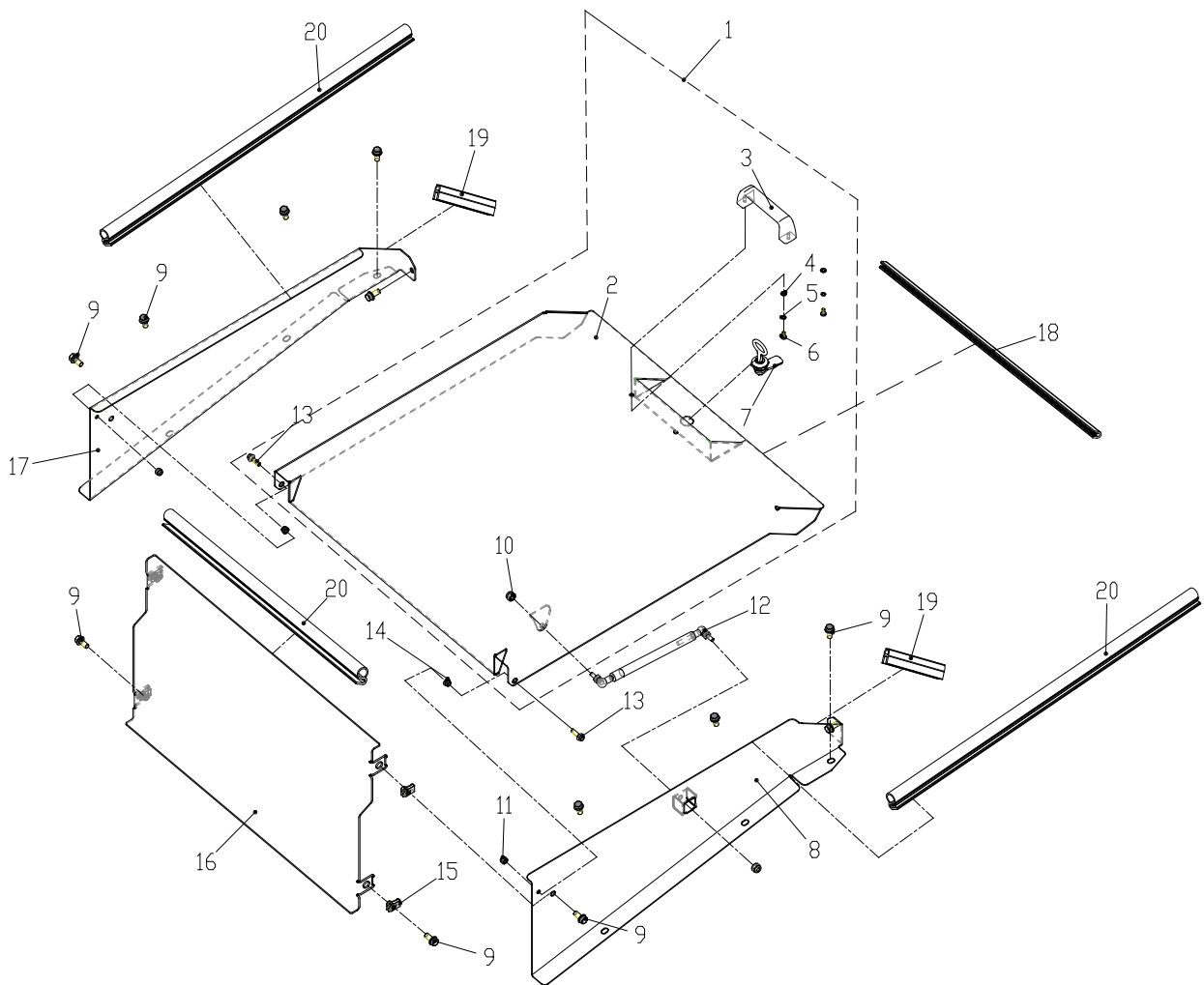
<b>IETM NO.</b>	<b>PART NO.</b>	<b>DESCRIPTION</b>	<b>QTY</b>
12-1	3320181523	Front adjustment welding	1
12-2	3220051522	Lock nut M8	4
12-3	3330411522	Inner mounting plate	2
12-4	3220341523	Lock nut M12	2
12-5	3220951523	Nut M12	2
12-6	3321021522	Pad	2
12-7	3321011522	Pin	2
12-8	3321041522	Pull rod	2
12-9	3330421522	Outer mounting plate	2
12-10	3220961523	Bolt M8×40	4

# REAR HEIGHT ADJUSTMENT



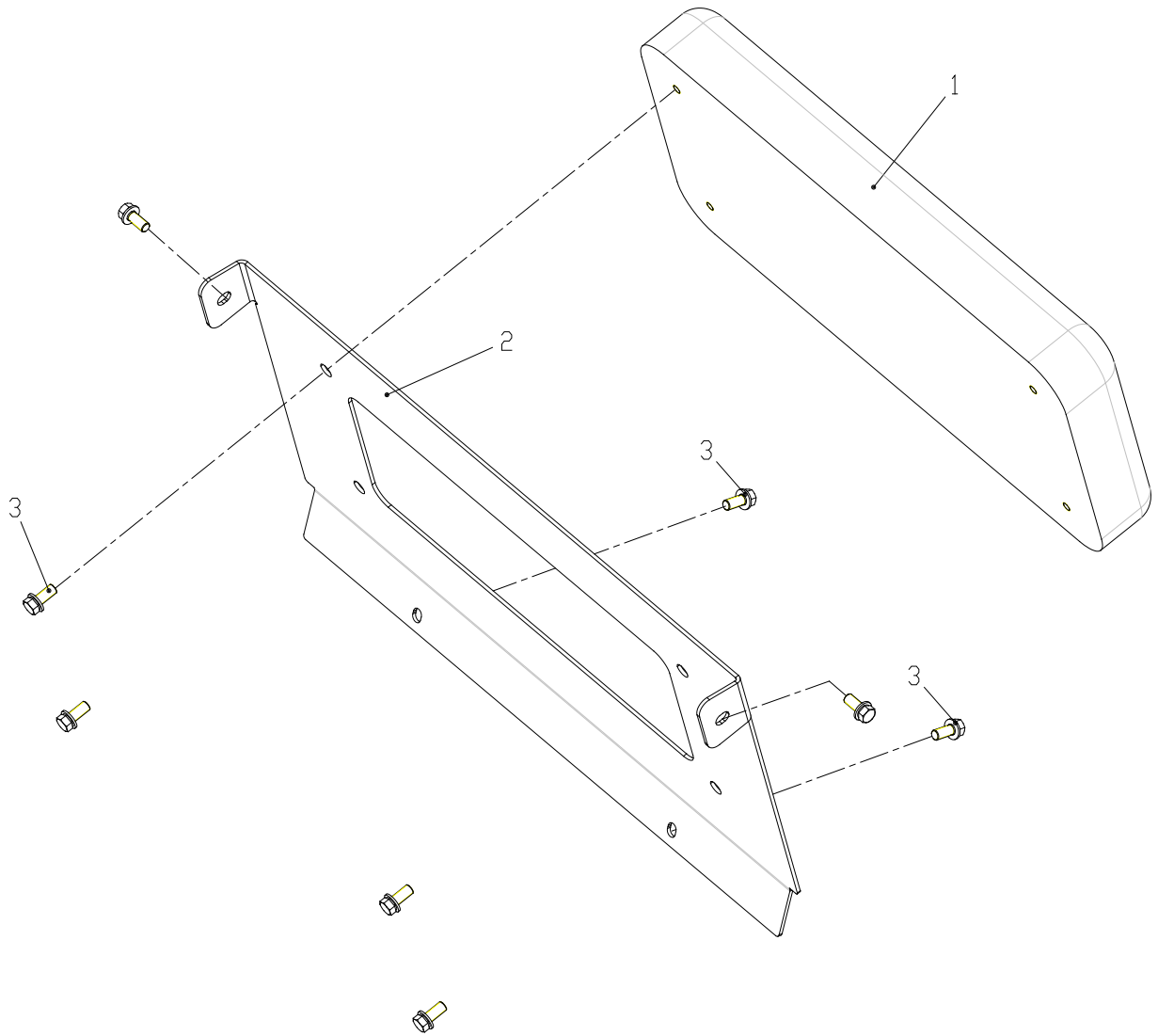
<b>IETM NO.</b>	<b>PART NO.</b>	<b>DESCRIPTION</b>	<b>QTY</b>
13-1	3320171523	Post-adjust welding	1
13-2	3220051522	Lock nut M8	4
13-3	3330411522	Inner mounting plate	2
13-4	3220341523	Lock nut M12	2
13-5	3220951523	Nut M12	2
13-6	3321021522	Pad	2
13-7	3321011522	Pin	2
13-8	3321041522	Pull rod	2
13-9	3330421522	Outer mounting plate	2
13-10	3220961523	Bolt M8×40	4
13-11	3320151523	Increase handle welding	1
13-12	3220391523	Lock nut M8	2
13-13	3220641523	Spring washer	2
13-14	3220711523	Flat washer	2
13-15	3220971523	Bolt M8×35	2
13-16	3410021523	Heightening handle	1

# BATTERY COVER ASSEMBLY



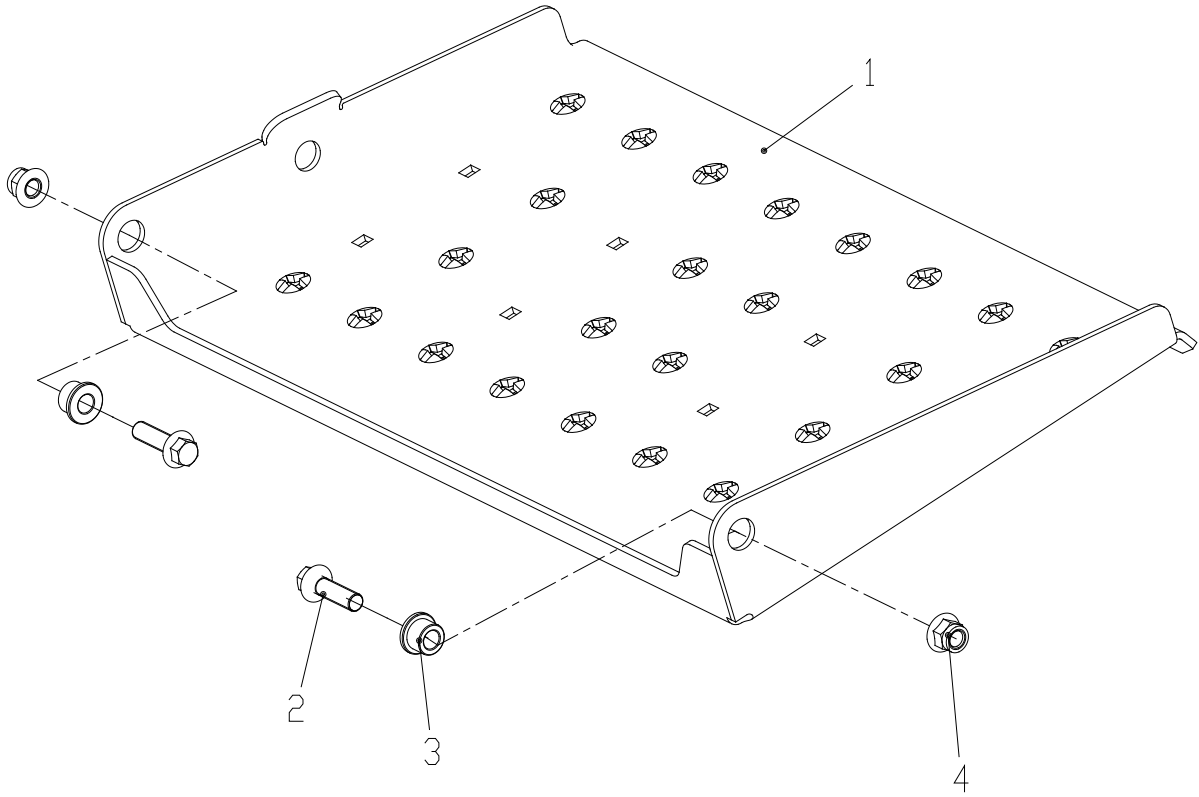
<b>IETM NO.</b>	<b>PART NO.</b>	<b>DESCRIPTION</b>	<b>QTY</b>
14-1	3110411523	Cover assembly , A.7 (GL)	1
14-2	3320481523	Cover welding , A.6 (GL)	1
14-3	3320491523	Handle , A.5 (GL)	1
14-4	3220621523	Spring washer $\phi$ 5	2
14-5	3220691523	Flat washer	2
14-6	3220811523	Screw M5×10	2
14-7	3190021523	Rotary tongue lock	1
14-8	3330331523	Left side plate welding	1
14-9	3220591523	Bolt assembly	12
14-10	3220391523	Lock nut M8	2
14-11	3220381523	Lock nut M6	2
14-12	3190031522	Gas Spring	1
14-13	3220171523	Bolt M6×20	2
14-14	3320281523	Bushing	2
14-15	3220731523	Reed nut M8	4
14-16	3330231523	Front plate	1
14-17	3330201523	Right side panel	1
14-18	3420251523	Rubber strip	0.61 m
14-19	3420261523	Thin bumper strip	0.2 m
14-20	3420271523	Rubber strip	1.8 m

# CUSHION ASSEMBLY



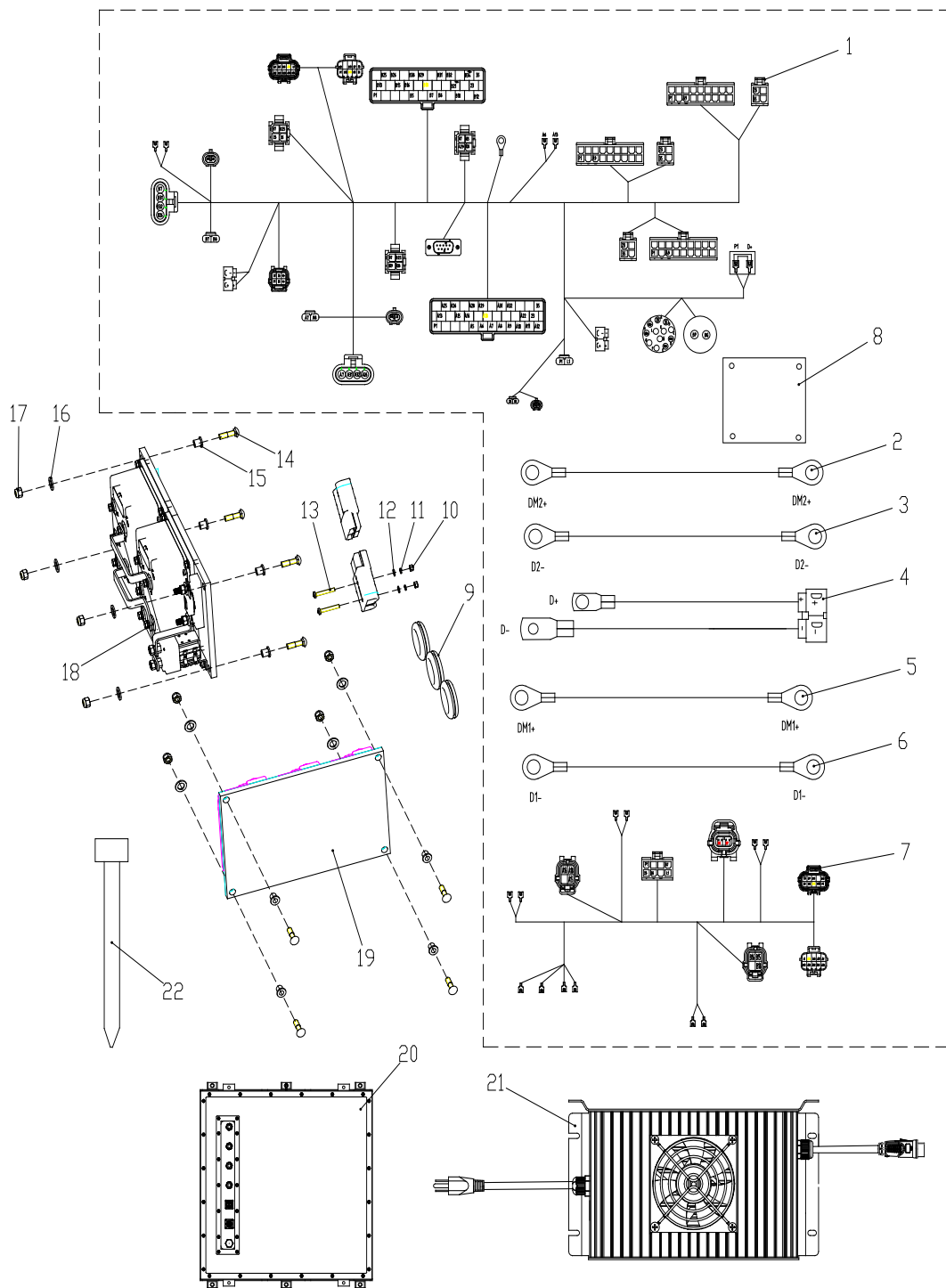
<b>IETM NO.</b>	<b>PART NO.</b>	<b>DESCRIPTION</b>	<b>QTY</b>
15-1	3190041523	Cushion ( below )	1
15-2	3330051523	Cushion fixing plate	1
15-3	3220591523	Bolt assembly	8

# PEDAL ASSEMBLY



<b>IETM NO.</b>	<b>PART NO.</b>	<b>DESCRIPTION</b>	<b>QTY</b>
16-1	3320521523	Pedal welding	1
16-2	3220571522	Bolt M10×35	2
16-3	3320531523	Standing bushing	2
16-4	3220401523	Lock nut	2

# ELECTRICAL COMPONENTS



<b>IETM NO.</b>	<b>PART NO.</b>	<b>DESCRIPTION</b>	<b>QTY</b>
17-1	3640011523	Vehicle control harness assembly	1
17-2	3640021523	Knife controller cable +	2
17-3	3640031523	Knife controller cable -	2
17-4	3640041523	Machine power harness	1
17-5	3640051523	Walking cutter controller cable +	1
17-6	3640061523	Walking cutter controller cable -	1
17-7	3640071523	Complete vehicle wiring harness assembly ( top )	1
17-8	3640081523	Thermal silica film	1
17-9	3410101523	Guard ring	3
17-10	3220281523	Nut M5	2
17-11	3220621523	Spring washer	2
17-12	3220691523	Flat washer	2
17-13	3220831523	Screw M5X35	2
17-14	3220521523	Bolt M8 × 30	8
17-15	3410081522	Bushing	8
17-16	3410071522	Washer	8
17-17	3220391523	Lock nut M8	8
17-18	3620021522	Drive controller	1
17-19	3620951522	Blade controller	1
17-20	2934802	Yiwei 13.8KW lithium iron phosphate battery pack (software version)	1
17-21	3690111522	Charger	1
17-22	34101427	Cable tie	50

# **GREENWORKS**

## **COMMERCIAL**

**Greenworks Commercial Tools**  
**PO Box 1238**  
**Mooreville, NC 28115**

**TOLL-FREE HELPLINE: 1-855-470-4267**